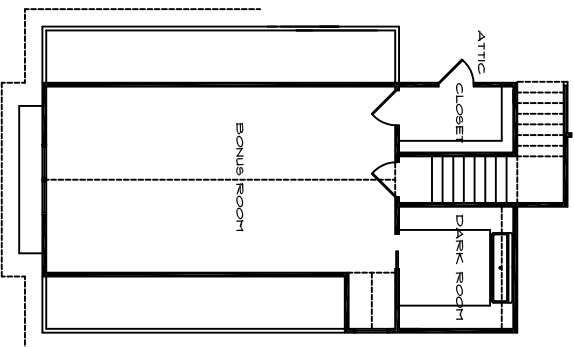


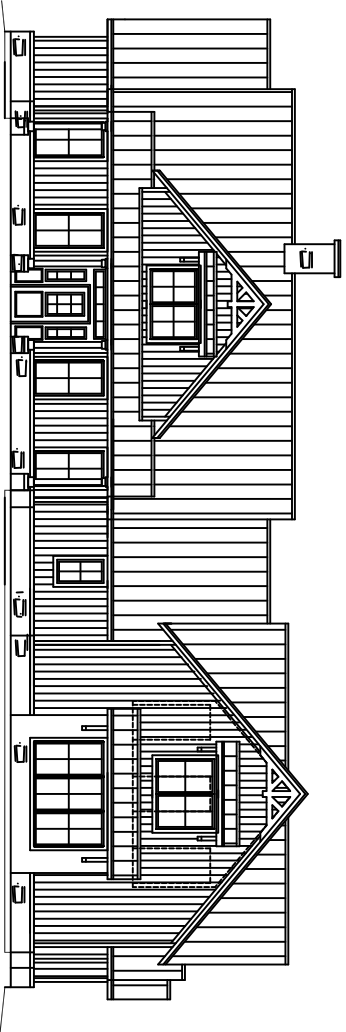
MAIN LEVEL FLOOR PLAN

SQUARE FOOTAGE CALCULATIONS

FIRST FLOOR - 7193 S.F.  
 SECOND FLOOR - 1952 S.F.  
 TOTAL LIVING S.F. - 3535 S.F.  
 TOTAL SLAB - 4660 S.F.



SECOND LEVEL FLOOR PLAN



FRONT ELEVATION