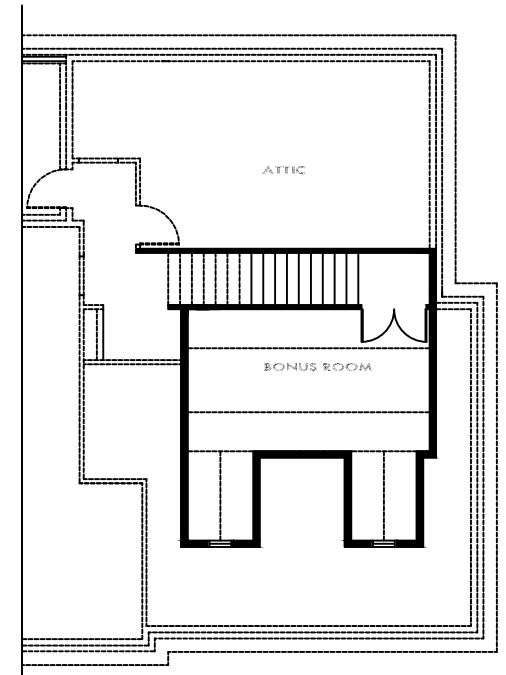


FLOOR PLAN



BONUS ROOM FLOOR PLAN

SQUARE FOOTAGE CALCULATIONS

MAIN LIVING	- 2521 S.F.
BONUS ROOM	- 363 S.F.
TOTAL LIVING S.F.	- 2884 S.F.
TOTAL SLAB	- 4142 S.F.



FRONT ELEVATION